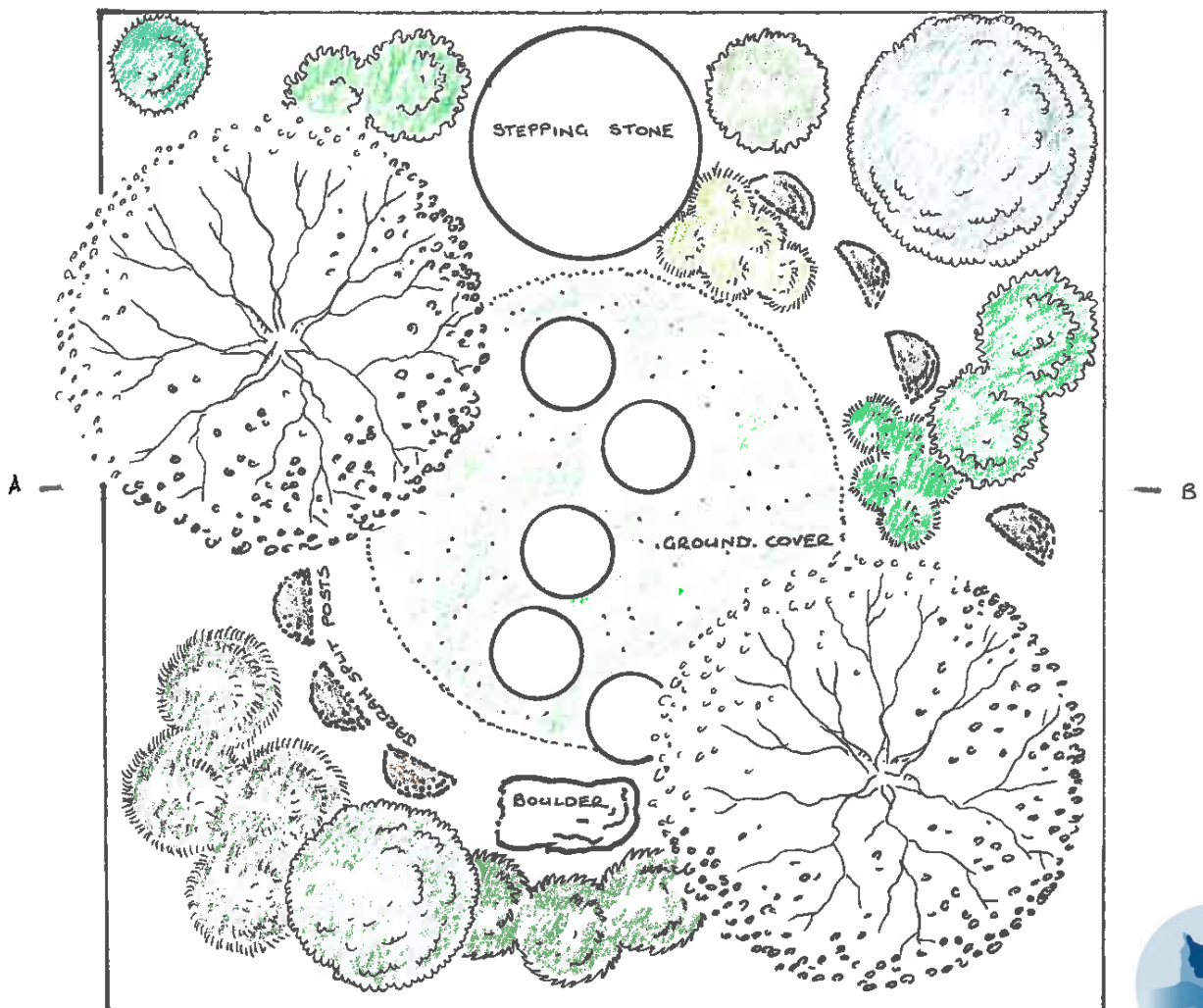




Garden Design Astartea

We all love living next to beautiful Geographe Bay and its connected wetlands and estuaries. But we must protect them for the future. GeoCatch is asking gardeners to reduce their use of fertilisers and water by installing a Bay OK garden. Use this Bay OK garden design to create a garden that will help reduce the amount of nutrients entering our waterbodies and improve their water quality. Find more designs online at: geocatch.asn.au/our-work/being-bay-ok/garden/



Garden Design **Astartea**

This garden combines a modern aesthetic with an informal casual planting scheme. Combining natural materials like jarrah posts and granite boulders reinforces a more natural appearance in this concept. The concept allows the client to tailor the planting to change the atmosphere.

The use of grey, blue plants will give a more coastal effect, bright colours will be more reminiscent of the bush and by using silvers and soft pastels a cottage affect would be achievable. This garden has been installed in Dunsborough Lakes and can be viewed by the public.

Recommended Plants

Trees

Hakea laurina
Corymbia ficifolia red capped gum
Corymbia erythrocorys

Large Shrubs

Hibbertia cuneiformis
Melaleuca huegelii
Ozothamnus 'Radiance'
Alyogyne 'Spring Mist'

Medium Shrubs

Grevillea 'Molly'
Guichenotia macrantha
Astartea 'Winter Pink'

Ground Covers

Carpobrotus virescens
Myoporum parvifolium 'Fine Leaf'
Chrysocephalum "Yellow Button"