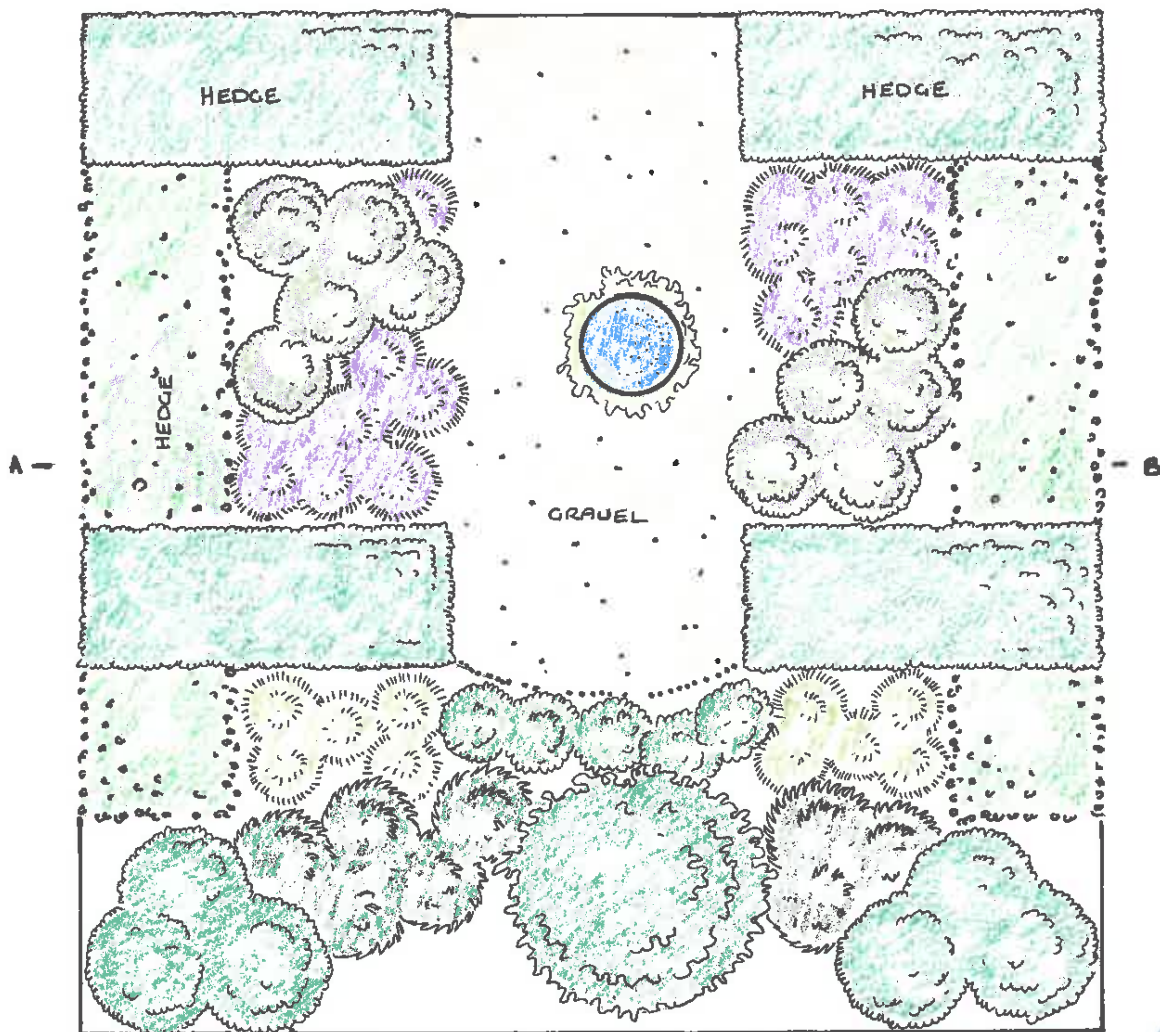




Garden Design Hibbertia

We all love living next to beautiful Geographe Bay and its connected wetlands and estuaries. But we must protect them for the future. GeoCatch is asking gardeners to reduce their use of fertilisers and water by installing a Bay OK garden. Use this Bay OK garden design to create a garden that will help reduce the amount of nutrients entering our waterbodies and improve their water quality. Find more designs online at: geocatch.asn.au/our-work/being-bay-ok/garden/



Garden Design **Hibbertia**

This highly structured garden would suit a home owner who enjoys spending time hedging and appreciates a sense of order in their surrounds. The side hedges provide privacy from neighbours and as such can be trimmed to an ultimate height of 2.5m. Anything higher than this could put the composition out of scale. The hedges running across the garden would be clipped to a lower height and are used primarily to divide the garden into components.

The gravel for the central path can be either limestone or pea gravel depending on the homeowner's taste and the style of the house. It is recommended that a tree or large shrub be used to terminate the site line from the house. The shrubs and grasses used to fill in the composition should be low and replicated on both sides of the garden to maintain a sense of balance.

Recommended Plants

Trees

Corymbia ficifolia (grafted)
Corymbia erythrocorys red capped gum
Hakea laurina

Large Hedge

Alyogyne 'West Coast Gem'
Hibbertia cuneiformis
Melaleuca huegelii

Low Hedge

Westringia 'Jervis Gem'
Grevillea 'Molly'
Correa 'Adorabell'

Low Shrubs

Chorizema cordatum
Crocea 'Southern Star Pink'
Eremophila 'Minie Pink'